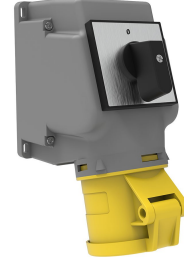


Product Code

BC1-3303-2550**Pako Switch 90° Angled
Surface Mounted Socket**

Category: 3x32A (2P+E) 4h

**Technical Specifications**

AMPERE	3/32A
POLE	2P+E
TENSION	110V-150V
CLOCKWISE	4h
HERTZ	50 Hz - 60 Hz
IP RATING	IP44
CONDUCTIVE MATERIAL	A.D. 58
BODY MATERIAL	Polyamide 6
BOX QUANTITY	1
NUMBER OF BOXES	18

Quality Certificates

BC1-3303-2550

Technical Drawing

